



## **PORTAGE REGIONAL RECREATION AUTHORITY**

### **Press Release**

**From the municipal offices of the PRRA**

February 8, 2018

The Portage Regional Recreation Authority, is excited to announce the Delta Beach Campground Seasonal Site Lottery process for the 2018 Camping Season.

With 2018 being the first operational year of the reconstructed Delta Beach Campground the PRRA will be offering seasonal campsites through a lottery process. All individuals interested in a seasonal campsite at Delta Beach Campground can pick-up a lottery application form from Stride Place, the RM of Portage la Prairie Office or download the form from [www.strideplace.ca](http://www.strideplace.ca).

Delta Beach Campground will feature 20 seasonal campsites with 10 Lake Front sites and 10 non-lake front sites. All sites are currently serviced with 30amp power and water. Seasonal sites will be available annually from May 15<sup>th</sup> to October 31<sup>st</sup>.

The Lottery application process will run from February 12<sup>th</sup> – March 9<sup>th</sup>, 2018. All applicants will then be entered into a random draw for the 20 available seasonal sites. The draw will be completed the week of March 12<sup>th</sup> and applicants will not be required to be present. Once the draw has been completed the site selection will be based on the order individuals have been drawn through the lottery process. Site selection will take place from March 19<sup>th</sup> – 30<sup>th</sup>, 2018 and can be completed in person, over the phone or by email.

Seasonal site fees will range from \$1,650 – 1,800 in 2018. The successful applicants will have the ability to retain their site year after year if they wish.

This is the first recreational site in the rural area to be managed by the Portage Regional Recreation Authority. The City and RM created the PRRA entity in 2009 to provide recreational services for the City and Rural municipalities. With a shared and strong commitment to community, the depth and quality of recreational services delivered to the region have increased substantially in the last nine years.

Expanding the range of recreational services to include the management of Delta Beach Campground is the natural next step of progress. With marketing and service delivery expertise already a foundational asset for PRRA, the additional responsibility will not only transfer into PRRA's operations smoothly, it will also enhance the overall campground experience in the region.

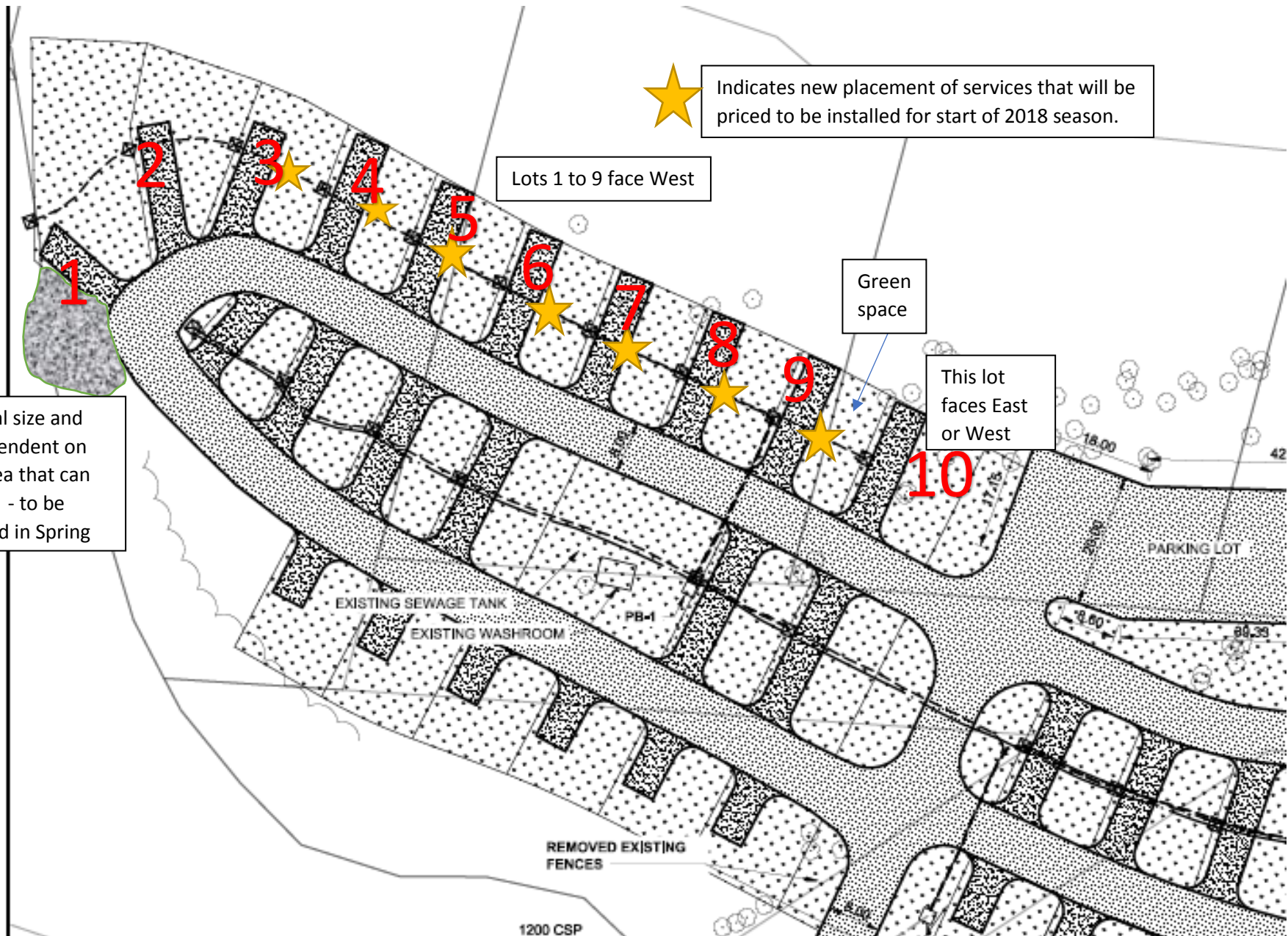
Questions regarding the seasonal site application process can be sent to [dsattler@prra.ca](mailto:dsattler@prra.ca) or by calling 204-857-7772.

★ Seasonal sites

Campground layout - illustration of lot assignments



LEGEND



Indicates new placement of services that will be priced to be installed for start of 2018 season.

Lots 1 to 9 face West

Green space

This lot faces East or West

Lot 1 actual size and shape dependent on bush in area that can be cleared - to be determined in Spring

REMOVED EXISTING FENCES

1200 CSP